



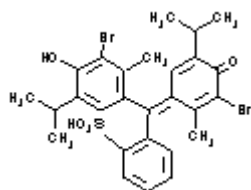
**PRODUCT CODE: 281168**

**Bromothymol Blue solution 0.04% for volumetric analysis**

pH indicator 6,0 yellow; 7,6 blue

$C_{27}H_{28}Br_2O_5S$

$C_{27}H_{28}Br_2O_5S$



M.= 624,40

CAS [76-59-5]

TARIC 2934 99 90 90

**SYNONYMS:** 3',3''-Dibromothymolsulphonephtalein, BTB

**PHYSICAL DATA:** liquid, Green, Miscible with alcohol and water • D 20/4 0,974 • Flash P.:38 °C •

**BIBLIOGRAPHY:**

**HAZARDOUS:** LD50 oral rat 7.060 mg/kg • LC50 inh rat 20000 ppm • VLA-ED (ethanol) 1.000 ppm1.910 mg/m<sup>3</sup>

**WEIGHT/VOLUME INFORMATION:** 1l~0,974 kg 1kg~1,027 l

**COMPOSITION:**

Bromothymol Blue	40 mg
Sodium Hydroxide 0.1 mol/l	0,8 ml
Ethanol absolute	20,4 ml
Water (s.q.m)	100 ml

Ed.: 1 . Vig.: 15.01.2011 .

Prod.: 281168